



THE
CYPRESS

2ND FLOOR PLAN

SQUARE FOOTAGE:
HEATED SPACE: APPROX. 104

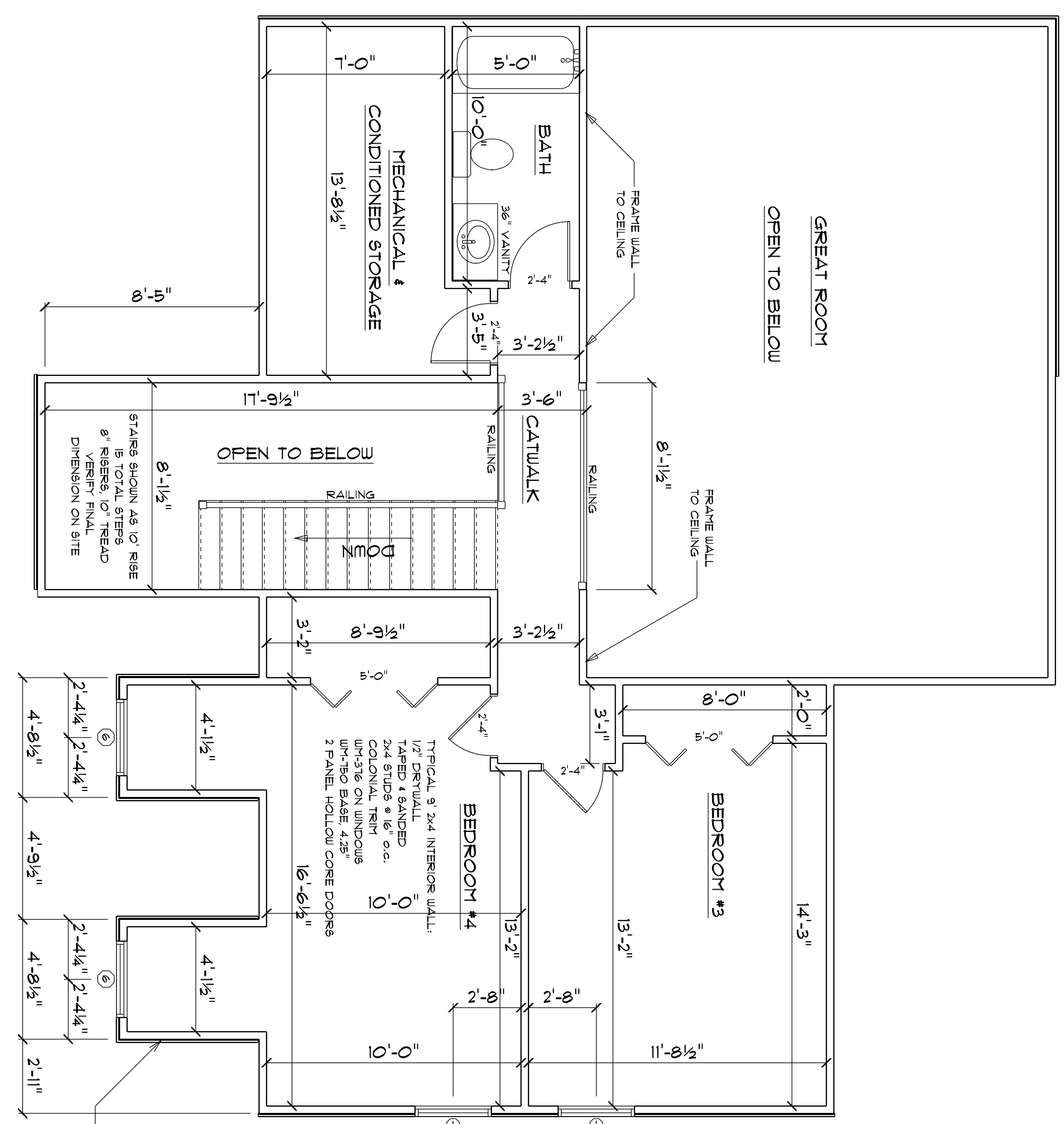
SCALE: 1/4" = 1'0"

INDEX:

- PAGE 1: FRONT & REAR ELEVATIONS
- PAGE 2: LEFT & RIGHT ELEVATIONS
- PAGE 3: FOUNDATION PLAN
- PAGE 4: 1ST FLOOR PLAN
- PAGE 5: 2ND FLOOR PLAN
- PAGE 6: BIRD'S EYE ROOF PLAN
- PAGE 7: CROSS SECTION
- PAGE 8: DETAILS
- PAGE 9: WINDOW/DOOR SCHEDULE
- E1: BASEMENT LIGHTING PLAN
- E2: 1ST FLOOR LIGHTING PLAN
- E3: 2ND FLOOR LIGHTING PLAN

October 11, 2012

PAGE 5



TYPICAL 8' 2x4 BRNG EXTERIOR WALL,
HOUSELAP
1/2" OSB SHEATHING
2x4 STDS & 16" o.c.
R13 BATT INSULATION
1/2" DRYWALL
TAPED & SANDED

TYPICAL 8' 5/4 INTERIOR WALL,
1/2" DRYWALL
TAPED & SANDED
2x4 STDS & 16" o.c.
WH-316 ON WINDOWS
WH-750 BASE, 4.25"
2 PANEL HOLLOW CORE DOORS

STAIRS SHOWN AS 10' RISE
18 TOTAL STERS
8" RISERS, 10" TREAD
VERIFY FINAL
DIMENSION ON SITE