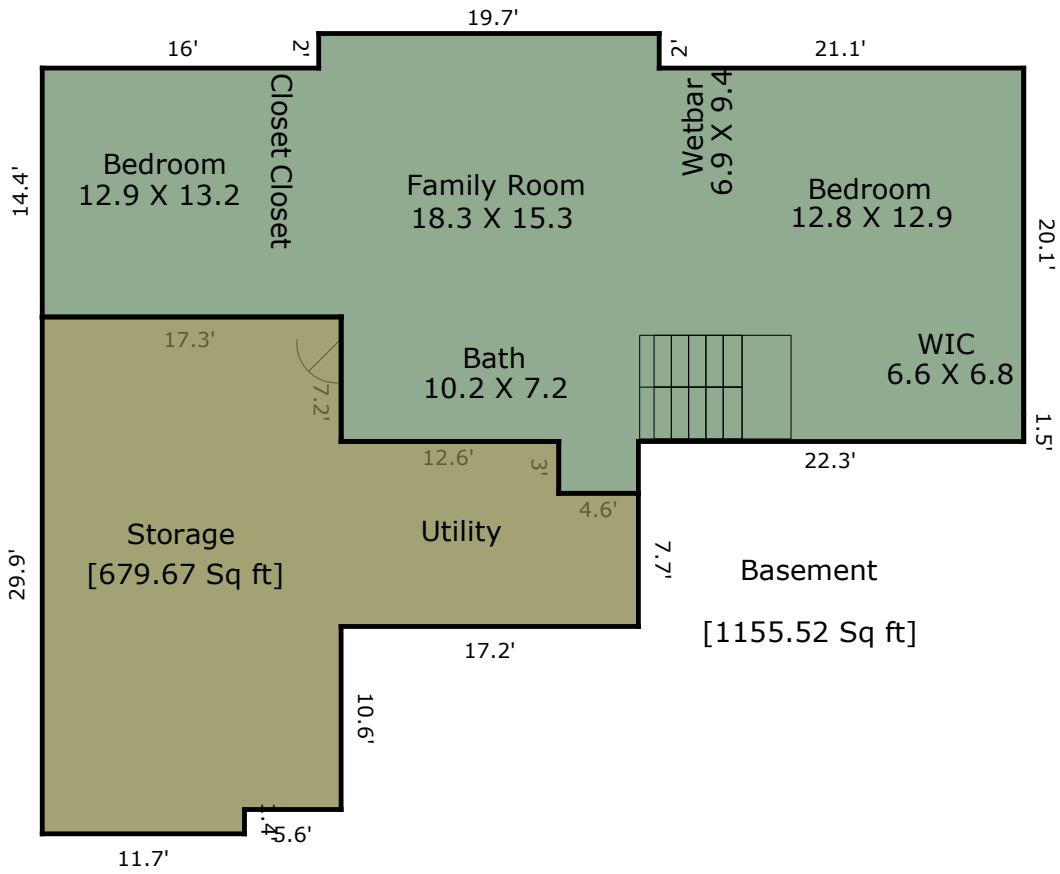


TOTAL Sketch by a la mode

**Area Calculations Summary**

Living Area		Calculation Details	
First Floor	1835.19 Sq ft	$19.7 \times 2 = 39.4$	
		$21.6 \times 22.3 = 481.68$	
		$34.5 \times 32.3 = 1114.35$	
		$12 \times 11.7 = 140.4$	
		$10.6 \times 5.6 = 59.36$	
<b>Total Living Area (Rounded):</b>	<b>1835 Sq ft</b>		
Non-living Area			
3 Car Attached	736.49 Sq ft	$22.2 \times 10.4 = 230.88$	
		$22.7 \times 22.2 = 503.94$	
		$0.1 \times 10.7 = 1.07$	
		$0.5 \times 0.1 \times 12 = 0.6$	
Front Porch	21.76 Sq ft	$6.8 \times 3.2 = 21.76$	
Wood Deck	138.8 Sq ft	$29.7 \times 4 = 118.8$	
		$4 \times 2 = 8$	
		$6 \times 2 = 12$	



TOTAL Sketch by a la mode

**Area Calculations Summary**

**Non-living Area**

Basement	1155.52 Sq ft	4.6 × 3 = 13.8
		19.7 × 2 = 39.4
		14.4 × 17.3 = 249.12
		21.6 × 39.5 = 853.2
Basement	679.67 Sq ft	7.7 × 4.6 = 35.42
		10.7 × 12.6 = 134.82
		17.3 × 28.5 = 493.05
		1.4 × 11.7 = 16.38