

Floor 2



Floor 1

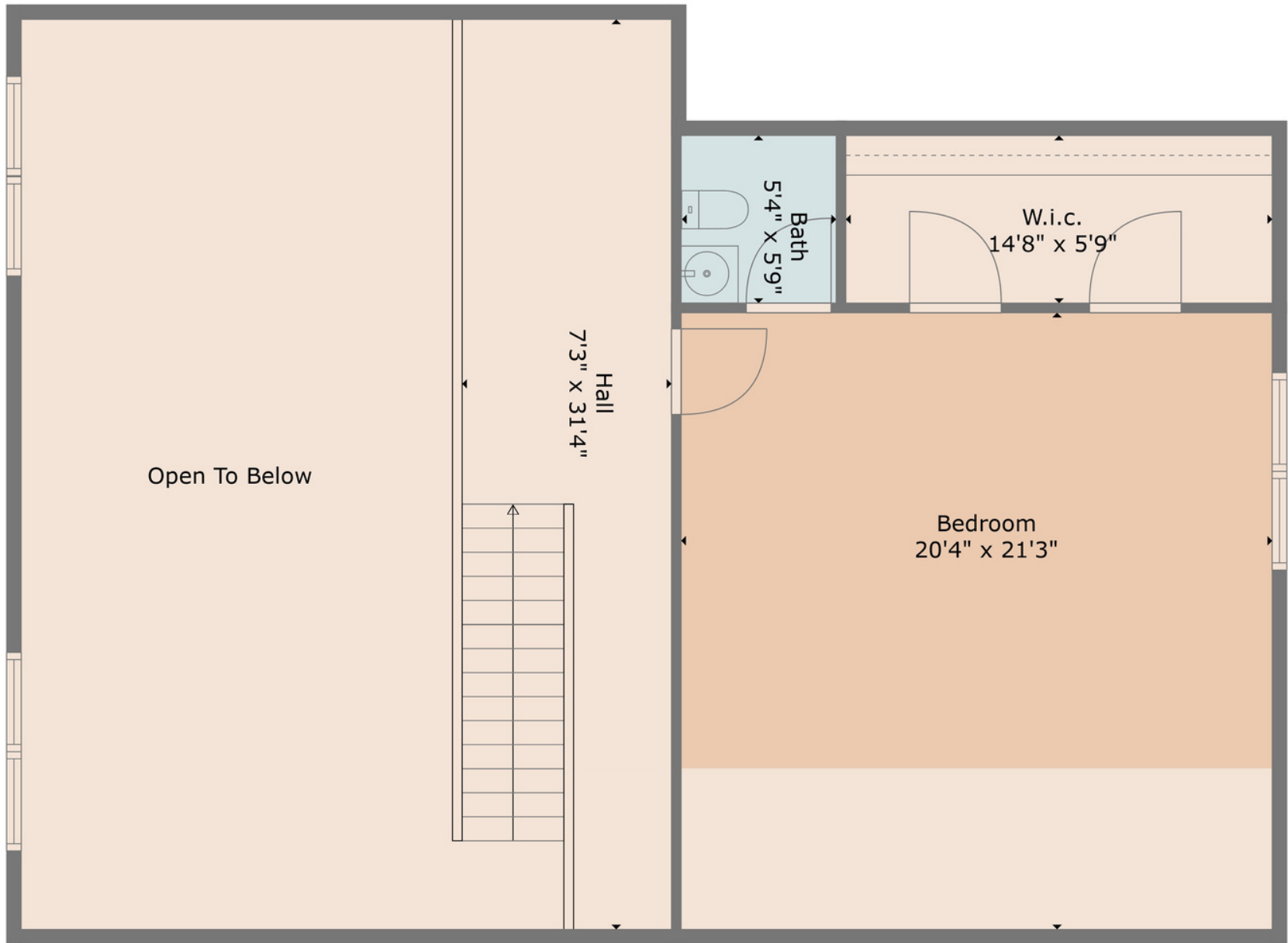
TOTAL: 1982 sq. ft

FLOOR 1: 1355 sq. ft, FLOOR 2: 627 sq. ft

EXCLUDED AREAS: PORCH: 411 sq. ft, DECK: 278 sq. ft, FIREPLACE: 11 sq. ft,
OPEN TO BELOW: 478 sq. ft, LOW CEILING: 165 sq. ft

This floor plan holds ANSI certification and was created by a service professional, not a licensed appraiser. The measurements are computed using CubiCasa Technology, recognized as highly reliable but Not Guaranteed.

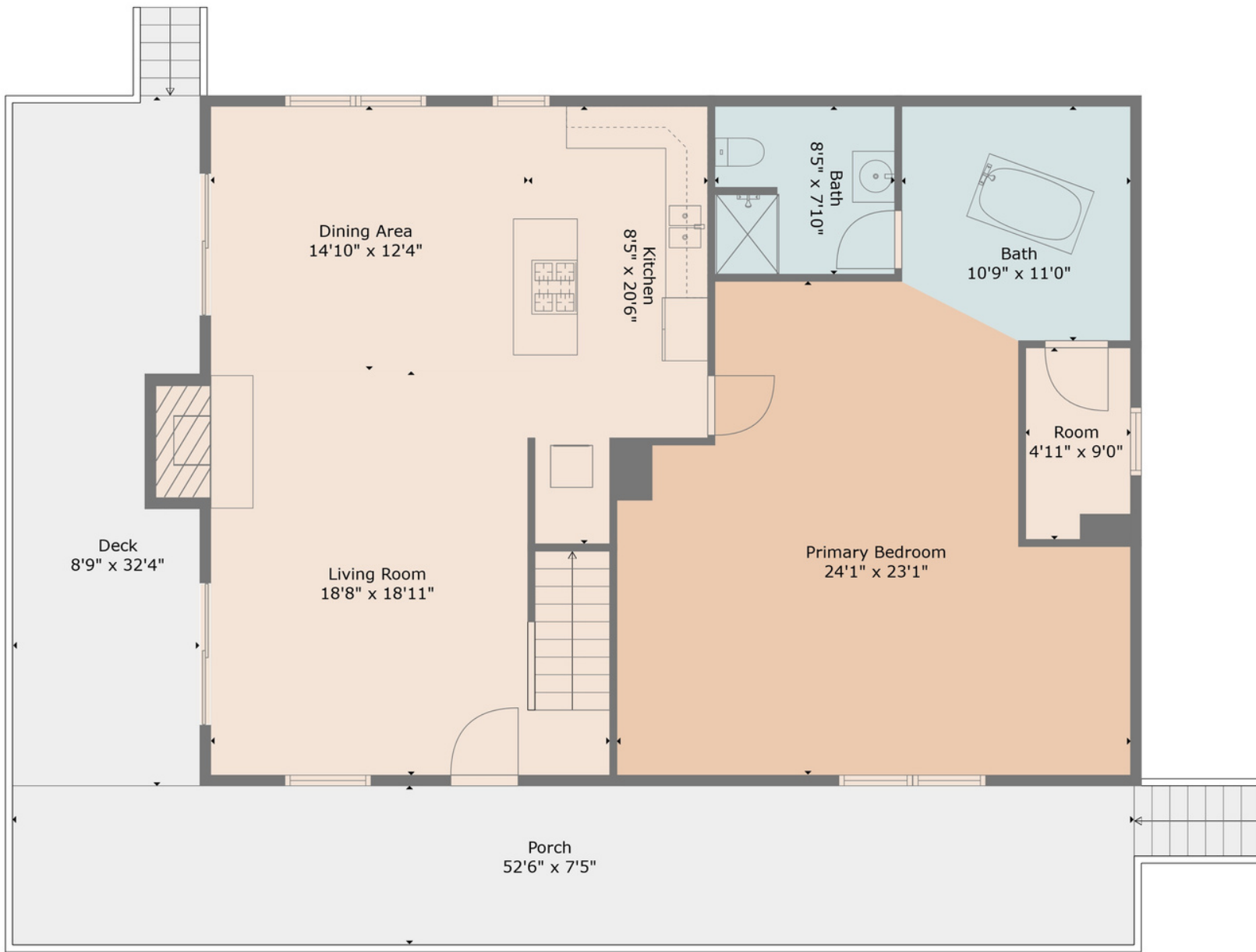
1694 Humpback Mountain Rd,
Spruce Pine, NC 28777



1694 Humpback Mountain Rd,
 Spruce Pine, NC 28777

TOTAL: 1982 sq. ft
 FLOOR 1: 1355 sq. ft, FLOOR 2: 627 sq. ft
 EXCLUDED AREAS: PORCH: 411 sq. ft, DECK: 278 sq. ft, FIREPLACE: 11 sq. ft,
 OPEN TO BELOW: 478 sq. ft, LOW CEILING: 165 sq. ft

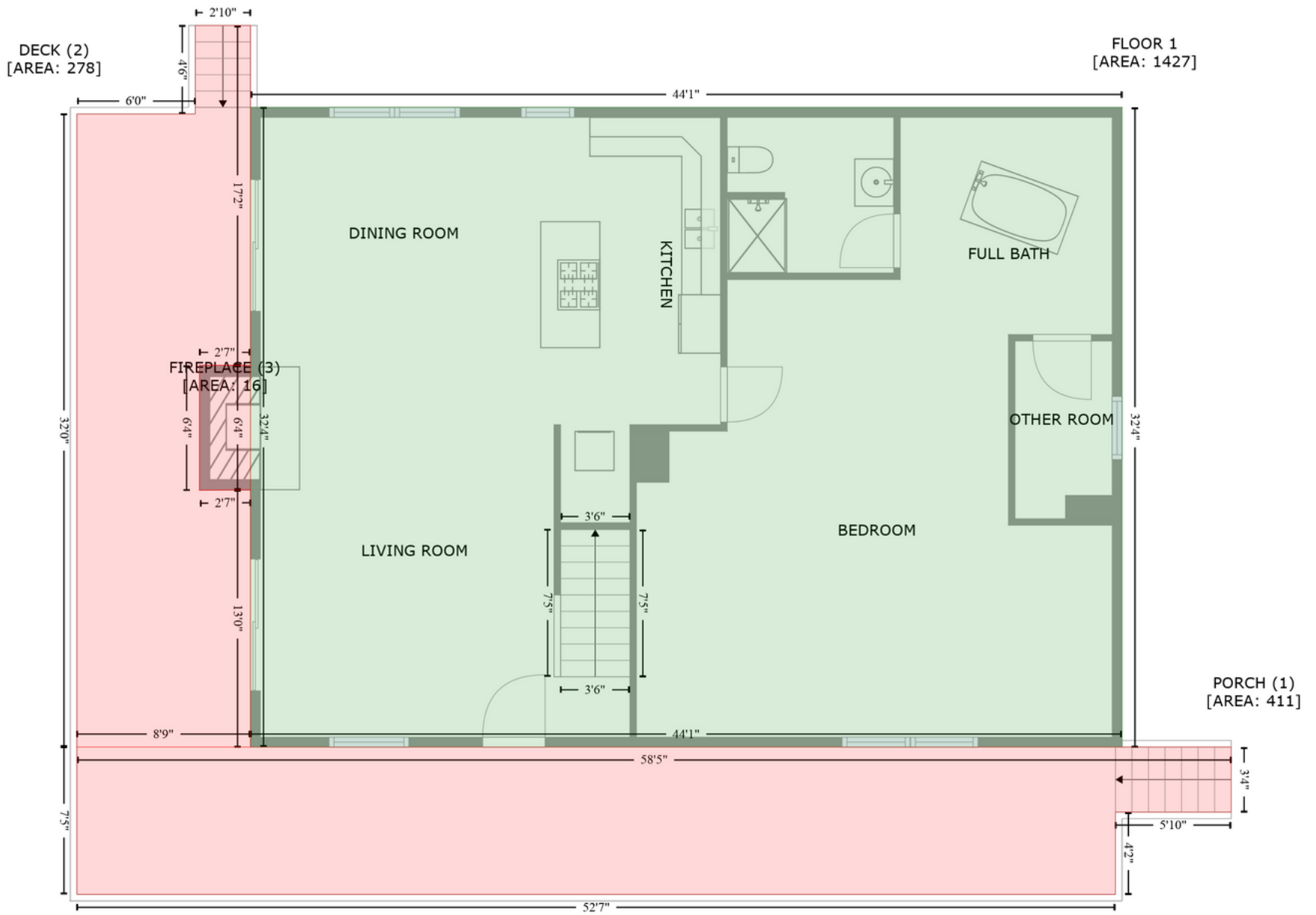
This floor plan holds ANSI certification and was created by a service professional, not a licensed appraiser. The measurements are computed using CubiCasa Technology, recognized as highly reliable but Not Guaranteed.



1694 Humpback Mountain Rd,
 Spruce Pine, NC 28777

TOTAL: 1982 sq. ft
 FLOOR 1: 1355 sq. ft, FLOOR 2: 627 sq. ft
 EXCLUDED AREAS: PORCH: 411 sq. ft, DECK: 278 sq. ft, FIREPLACE: 11 sq. ft,
 OPEN TO BELOW: 478 sq. ft, LOW CEILING: 165 sq. ft

This floor plan holds ANSI certification and was created by a service professional, not a licensed appraiser. The measurements are computed using CubiCasa Technology, recognized as highly reliable but Not Guaranteed.

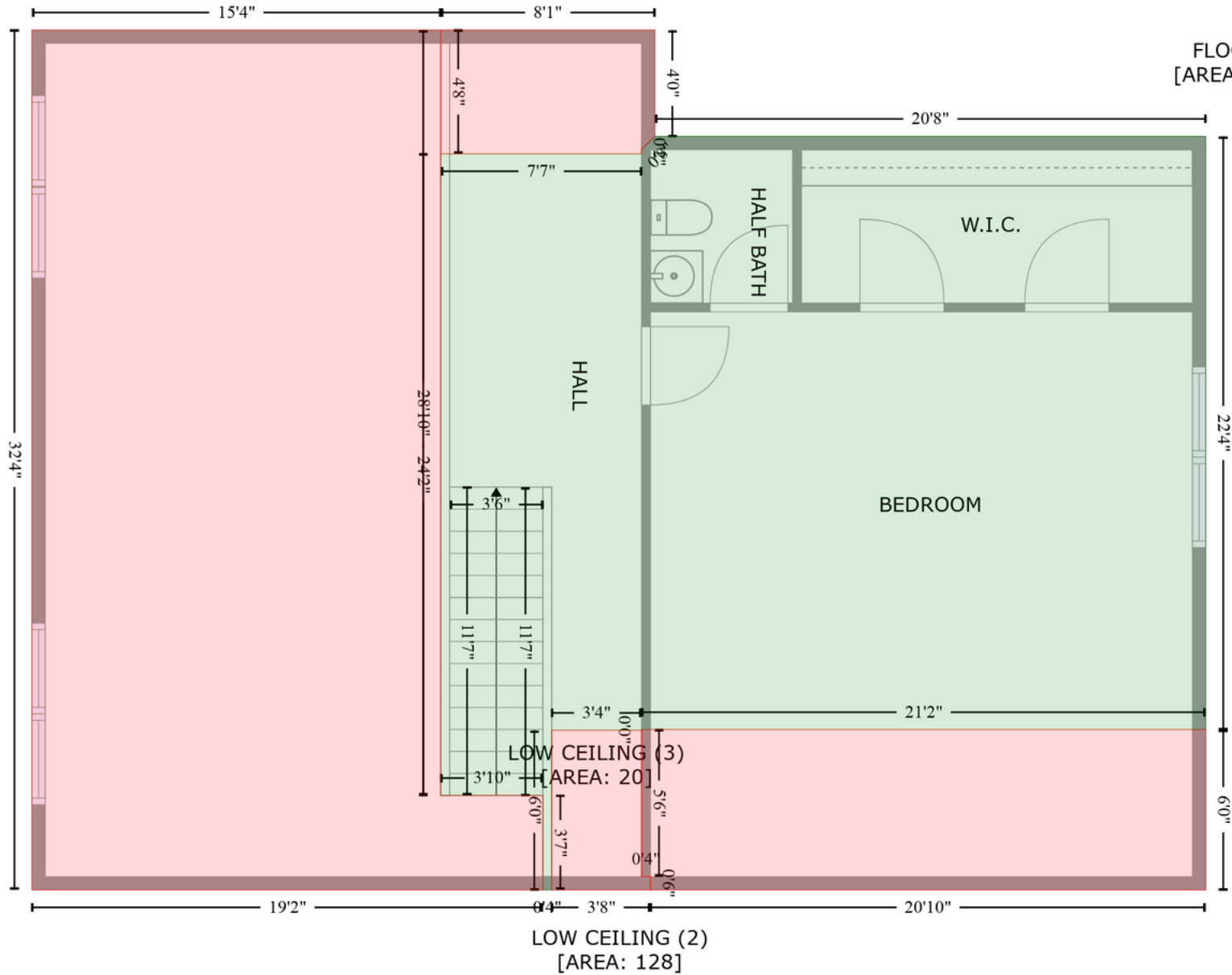


This floor plan holds ANSI certification and was created by a service professional, not a licensed appraiser. The measurements are computed using CubiCasa Technology, recognized as highly reliable but Not Guaranteed.

OPEN TO BELOW (1)
[AREA: 511]

LOW CEILING (4)
[AREA: 37]

FLOOR 2
[AREA: 648]



This floor plan holds ANSI certification and was created by a service professional, not a licensed appraiser. The measurements are computed using CubiCasa Technology, recognized as highly reliable but Not Guaranteed.