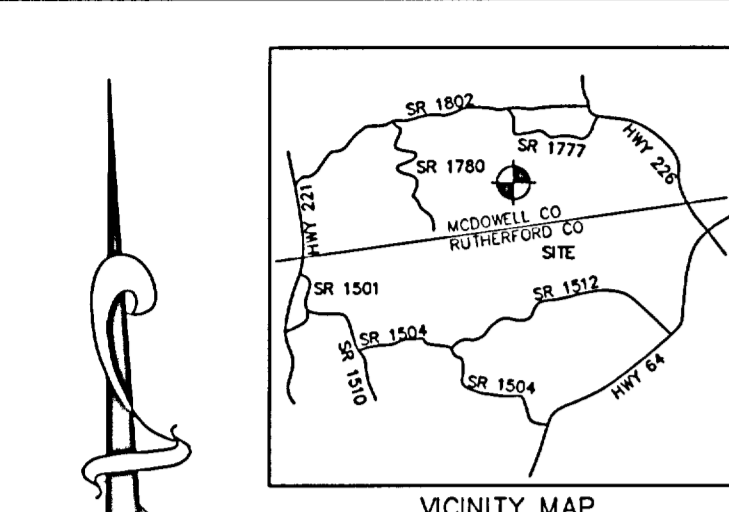


# GRANDVIEW PEAKS PHASE SIX and Revision of Lots 132 and 133

THE PURPOSE OF THIS REVISION IS TO CHANGE THE CONFIGURATION OF LOTS 132 AND 133. THIS PLAT REPLACES AND SUPERSEDES THE PREVIOUSLY RECORDED PLAT RECORDED IN PLAT BOOK 14, PAGE 86, BUT ONLY AS IT REFERS TO LOTS 132 AND 133. (Revised July 30, 2007)  
ALL SPECIAL NOTES AND RESTRICTIONS PREVIOUSLY RECORDED APPLY TO THIS REVISION.



Calls down centerline of Mountain Vista Drive (50' R/W)

LINE	BEARING	LENGTH
L1	N47°25'06"W	39.53'
L2	N50°21'33"W	43.62'
L3	N62°50'37"W	45.24'
L4	N70°06'02"W	43.67'
L5	N70°33'20"W	52.79'
L6	N63°56'25"W	38.50'
L7	N54°28'14"W	31.83'
L8	S50°29'34"E	57.00'
L9	N52°37'27"W	31.51'
L10	N56°28'55"W	35.63'
L11	S66°19'48"E	26.47'
L12	S70°52'27"E	31.69'
L13	S74°15'18"E	57.98'
L14	S76°41'12"E	166.08'
L15	S79°20'02"E	50.75'
L16	S86°20'05"E	19.57'
L17	S80°20'05"E	19.04'
L18	N85°50'55"E	10.52'
L19	N84°55'55"E	39.16'
L20	N79°30'31"E	108.14'
L21	N83°09'47"E	37.19'
L22	N83°09'47"E	36.87'
L23	N86°30'16"E	62.59'
L24	S86°18'45"E	63.97'
L25	S78°59'25"E	22.97'
L26	S78°59'25"E	38.49'
L27	S77°04'22"E	217.36'
L28	S52°28'34"E	40.93'
L29	S52°28'34"E	22.06'
L30	S48°28'23"E	72.86'
L31	S58°17'14"E	44.52'
L32	S51°05'00"E	46.61'
L33	S68°38'52"E	46.31'
L34	S71°30'32"E	51.43'
L35	S52°28'34"E	74.59'
L36	S84°50'37"E	100.07'
L37	S79°07'49"E	86.74'
L38	S71°15'05"E	40.84'
L39	S60°34'36"E	48.28'
L40	S59°25'30"E	23.29'

Calls down centerline of Scenic Overlook Drive (50' R/W)

LINE	BEARING	LENGTH
L1	N02°20'15"E	48.22'
L2	N02°54'22"W	116.23'
L3	N09°28'57"W	120.11'
L4	N06°08'09"E	19.04'
L5	N06°08'09"E	101.69'
L6	N09°45'21"E	65.83'
L7	S16°25'00"W	55.74'
L8	N21°59'58"E	61.21'
L9	N30°21'33"E	49.17'
L10	N42°05'48"E	45.72'
L11	S34°48'25"W	27.59'
L12	S34°48'25"W	13.61'
L13	S26°34'12"W	56.21'
L14	S21°00'32"W	51.03'
L15	N17°40'29"E	60.84'
L16	N29°03'14"W	27.18'
L17	N34°45'02"E	44.78'
L18	N83°39'34"E	35.14'
L19	N44°32'53"E	50.16'
L20	N84°52'02"E	111.15'
L21	S56°08'23"E	36.69'
L22	S87°20'39"E	48.06'
L23	N65°39'03"E	33.78'
L24	N01°27'11"W	106.25'
L25	N47°23'29"E	60.17'
L26	N76°23'49"E	102.36'
L27	N41°02'53"E	55.08'
L28	N59°01'48"E	77.35'
L29	N51°16'41"E	58.17'
L30	N58°54'59"E	78.50'
L31	N38°30'56"E	43.47'
L32	N53°27'48"E	17.00'
L33	N24°19'21"E	14.25'
L34	N49°38'13"E	79.63'
L35	N19°17'09"E	72.13'
L36	N46°15'15"E	29.11'
L37	N28°19'19"E	29.18'
L38	N56°01'19"E	28.18'
L39	N25°54'56"E	27.92'
L40	N65°27'56"E	15.37'
L41	N46°15'15"E	30.58'
L42	N12°28'34"E	59.74'
L43	N46°47'52"E	17.90'
L44	N12°19'03"W	28.35'
L45	N40°15'26"E	54.59'
L46	N62°52'22"E	23.18'
L47	N05°17'22"E	22.32'
L48	N34°08'33"E	26.80'
L49	N17°02'13"E	37.37'
L50	N39°52'20"E	68.22'
L51	N49°19'13"E	10.45'
L52	N20°55'55"E	22.53'
L53	N52°56'49"E	15.40'
L54	N33°24'50"E	38.55'
L55	N44°15'47"E	28.82'
L56	N60°19'00"E	28.72'
L57	N11°24'31"E	31.09'
L58	N42°48'23"E	70.26'
L59	N65°39'17"E	22.89'
L60	N02°32'34"E	45.27'
L61	N53°50'23"E	20.13'
L62	N31°32'40"E	53.81'
L63	N55°31'30"E	29.24'
L64	N47°27'51"E	78.53'
L65	N63°27'29"E	63.70'
L66	N32°40'36"E	32.90'
L67	N46°42'24"E	25.84'
L68	N15°47'42"E	33.77'
L69	N54°38'24"E	20.38'
L70	N29°53'30"E	29.00'
L71	N12°47'30"E	15.04'

Calls down centerline of creek

LINE	BEARING	DISTANCE
B1	N17°58'05"E	23.37'
B2	N29°03'14"W	27.18'
B3	N34°45'02"E	44.78'
B4	N83°39'34"E	35.14'
B5	N44°32'53"E	50.16'
B6	N84°52'02"E	111.15'
B7	S56°08'23"E	36.69'
B8	S87°20'39"E	48.06'
B9	N65°39'03"E	33.78'
B10	N01°27'11"W	106.25'
B11	N47°23'29"E	60.17'
B12	N76°23'49"E	102.36'
B13	N41°02'53"E	55.08'
B14	N59°01'48"E	77.35'
B15	N51°16'41"E	58.17'
B16	N58°54'59"E	78.50'
B17	N38°30'56"E	43.47'
B18	N53°27'48"E	17.00'
B19	N24°19'21"E	14.25'
B20	N49°38'13"E	79.63'
B21	N19°17'09"E	72.13'
B22	N46°15'15"E	29.11'
B23	N28°19'19"E	29.18'
B24	N56°01'19"E	28.18'
B25	N25°54'56"E	27.92'
B26	N65°27'56"E	15.37'
B27	N46°15'15"E	30.58'
B28	N12°28'34"E	59.74'
B29	N46°47'52"E	17.90'
B30	N12°19'03"W	28.35'
B31	N40°15'26"E	54.59'
B32	N62°52'22"E	23.18'
B33	N05°17'22"E	22.32'
B34	N34°08'33"E	26.80'
B35	N17°02'13"E	37.37'
B36	N39°52'20"E	68.22'
B37	N49°19'13"E	10.45'
B38	N20°55'55"E	22.53'
B39	N52°56'49"E	15.40'
B40	N33°24'50"E	38.55'
B41	N44°15'47"E	28.82'
B42	N60°19'00"E	28.72'
B43	N11°24'31"E	31.09'
B44	N42°48'23"E	70.26'
B45	N65°39'17"E	22.89'
B46	N02°32'34"E	45.27'
B47	N53°50'23"E	20.13'
B48	N31°32'40"E	53.81'
B49	N55°31'30"E	29.24'
B50	N47°27'51"E	78.53'
B51	N63°27'29"E	63.70'
B52	N32°40'36"E	32.90'
B53	N46°42'24"E	25.84'
B54	N15°47'42"E	33.77'
B55	N54°38'24"E	20.38'
B56	N29°53'30"E	29.00'
B57	N12°47'30"E	15.04'

Calls down center of branch South of Lots 232 & 231

LINE	BEARING	LENGTH
B1	S39°48'54"W	20.00'
B2	S06°51'31"W	22.85'
B3	S34°50'39"W	17.03'
B4	S44°16'31"W	19.89'
B5	S27°30'40"W	27.82'
B6	S43°14'10"W	18.82'
B7	S65°16'49"W	12.69'
B8	N37°48'28"E	41.13'
B9	S55°40'08"W	26.05'
B10	S48°42'24"W	25.84'
B11	S03°39'00"W	17.35'
B12	S12°13'13"W	42.26'
B13	S33°13'25"W	8.88'
B14	S06°55'50"W	36.53'
B15	N23°19'35"E	70.46'
B16	S32°21'35"W	33.25'
B17	S52°57'10"W	44.73'
B18	S37°22'36"W	25.23'
B19	S64°56'22"W	23.55'
B20	N69°00'16"W	23.88'
B21	S21°08'52"W	24.69'
B22	S69°55'20"W	34.20'
B23	S34°05'02"W	17.98'
B24	N02°12'17"E	15.43'
B25	S84°22'43"E	37.36'
B26	S10°35'57"E	25.75'
B27	S21°43'03"E	24.81'

Calls down centerline of Mossy Oak Trail (50' R/W)

LINE	BEARING	LENGTH
L147	N88°56'43"E	9.20'
L148	S80°40'03"W	107.52'
L149	S67°05'11"W	67.05'
L150	S46°25'20"W	64.33'
L151	S27°29'28"W	67.18'
L152	S08°11'54"W	71.84'
L153	N01°54'49"E	70.52'
L154	N81°28'32"E	97.86'
L155	S88°20'07"E	81.85'

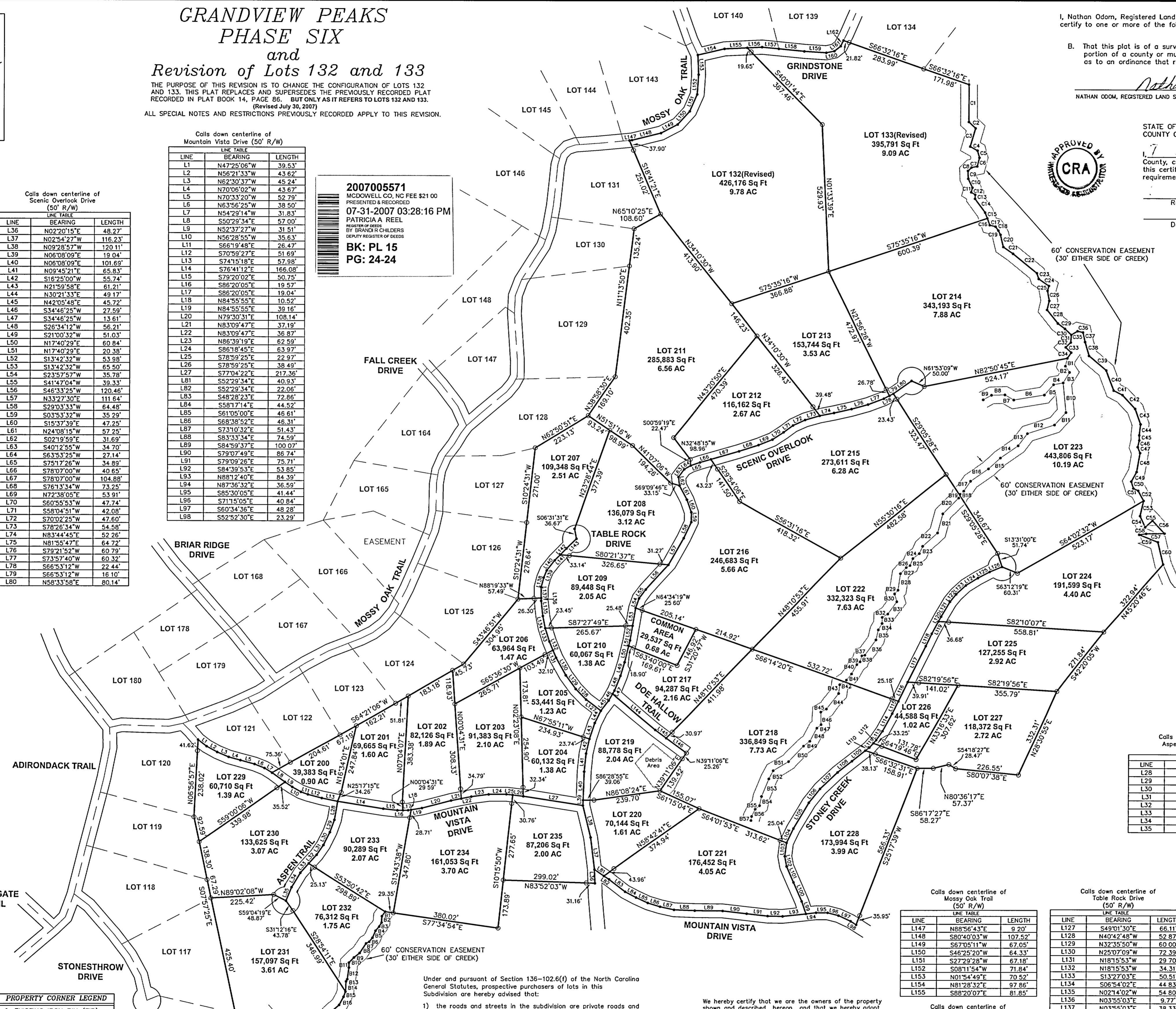
Calls down centerline of Table Rock Drive (50' R/W)

LINE	BEARING	LENGTH
L127	N88°56'43"E	66.11'
L128	N40°42'48"W	52.87'
L129	N32°35'50"W	60.00'
L130	N20°07'09"W	72.39'
L131	N18°15'53"W	29.70'
L132	N18°15'53"W	34.31'
L133	S13°27'03"E	50.51'
L134	S06°54'02"E	44.83'
L135	N02°14'02"W	46.45'
L136	N03°55'03"E	9.77'
L137	N03°55'03"E	38.33'
L138	N18°38'32"E	35.32'
L139	S26°47'15"W	28.49'
L140	N41°50'07"E	46.45'
L141	N48°14'28"E	28.95'
L142	N48°14'28"E	31.87'
L143	S49°36'21"W	50.06'

PROPERTY CORNER LEGEND

- EXISTING IRON PIN (EIP)
- NEW IRON PIN (NIP)
- POINT
- NAIL OR RAILROAD SPIKE
- CONCRETE MONUMENT
- RIGHT OF WAY MONUMENT
- STONE

2007005571  
MCDOWELL CO, NO FEE \$21.00  
PRESENTED & RECORDED  
07-31-2007 03:28:16 PM  
PATRICIA A. REEL  
REGISTER OF DEEDS  
BY BRANCH CHILDERS  
DEPUTY REGISTER OF DEEDS  
BK: PL 15  
PG: 24-24



I, Nathan Odum, Registered Land Surveyor No. L-2718, certify to one or more of the following as indicated

B. That this plat is of a survey that is located in such portion of a county or municipality that is unregulated as to an ordinance that regulates parcels of land.

*Nathan Odum*  
NATHAN ODUM, REGISTERED LAND SURVEYOR NO. L-2718  
STATE OF NORTH CAROLINA  
COUNTY OF MCDOWELL

Review Officer of McDowell County, certify that the map or plat to which this certification is affixed meets all statutory requirements for recording.

Date: \_\_\_\_\_

APPROVED BY  
CRA  
COMMUNITY DEVELOPMENT

APPROVED TO RECORD  
TAX DEPARTMENT

Calls down centerline of Grindstone Drive (50' R/W)

LINE	BEARING	LENGTH
L156	S88°20'07"E	52.92'
L157	S80°05'55"E	60.44'
L158	S80°05'55"E	92.29'
L159	S82°09'28"E	79.24'
L160	N83°00'00"E	29.41'
L161	N56°35'04"E	28.78'
L162	N30°57'23"E	22.47'

Property line calls down center of branch East of lots 133, 214, 223, and 224

LINE	BEARING	LENGTH
C1	N04°00'46"E	135.93'
C2	N42°01'21"W	33.06'
C3	N20°46'12"E	66.95'
C4	N56°09'08"W	30.17'
C5	N19°00'48"W	26.38'
C6	N18°27'55"E	32.46'
C7	N82°57'46"E	20.93'
C8	N49°17'53"E	17.49'
C9	N01°39'25"E	28.32'
C10	N20°43'39"W	35.67'
C11	N19°32'03"E	17.07'
C12	N52°48'58"W	17.18'
C13	N07°12'43"E	14.87'
C14	N31°44'51"W	61.61'
C15	N15°59'25"W	22.15'
C16	N19°59'28"W	25.86'
C17	N71°25'49"W	21.21'
C18	N31°53'02"W	17.29'
C19	N23°51'15"W	16.85'
C20	N09°27'06"W	44.90'
C21	N50°24'23"W	42.86'
C22	N46°12'16"W	111.28'
C23	N14°18'13"W	21.67'
C24	N50°32'26"W	44.54'
C25	N18°44'52"E	18.16'
C26	N05°59'46"W	37.22'
C27	N17°36'14"E	33.93'
C28	N35°01'05"W	61.65'
C29	N49°08'31"W	31.93'
C30	N47°52'32"W	31.43'
C31	N07°58'28"E	27.03'
C32	N49°55'45"E	26.16'
C33	N41°31'47"W	27.64'
C34	N38°02'13"E	24.66'
C35	N63°27'40"E	26.11'
C36	N05°59'46"W	20.07'
C37	S08°39'43"E	34.97'
C38	N11°58'04"E	52.11'
C39	S45°18'00"E	81.45'
C40	S16°06'35"E	78.22'
C41	S39°05'22"E	35.75'
C42	S24°52'28"E	66.51'
C43	S15°53'08"E	57.48'
C44	S10°39'45"W	40.10'
C45	S03°12'50"W	18.37'
C46	S16°47'47"W	24.97'
C47	S27°12'04"E	23.77'
C48	S14°06'42"W	70.37'
C49	S32°47'17"W	39.87'
C50	S12°59'25"E	26.08'
C51	S59°51'58"E	18.81'
C52	S24°52'28"E	41.10'
C53	S17°20'53"W	55.14'
C54	S20°18'30"E	44.81'
C55	N51°45'34"E	35.58'
C56	S38°41'32"E	63.74'
C57	N89°34'55"W	66.04'
C58	S66°37'32"W	25.00'
C59	S63°45'42"E	72.67'
C60	S09°03'28"E	83.54'

Calls down centerline of Stoney Creek Drive (50' R/W)

LINE	BEARING	LENGTH
L99	S14°40'10"E	47.62'
L100	N19°26'21"W	74.54'
L101	N19°37'12"W	61.20'
L102	N05°18'35"W	37.20'
L103	N11°19'54"E	48.72'
L104	N29°18'56"E	57.93'
L105	N34°34'43"E	109.05'
L106	N42°59'46"E	63.74'
L107	N51°34'07"E	85.57'
L108	N58°08'22"E	65.19'
L109	N55°19'14"E	61.79'
L110	N55°19'14"E	17.97'
L111	N45°31'40"E	21.78'
L112	N45°31'40"E	15.66'