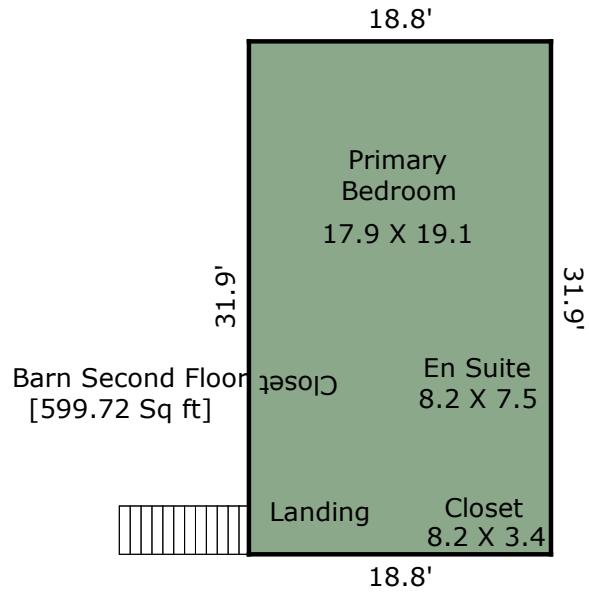


TOTAL Sketch by a la mode

**Area Calculations Summary**

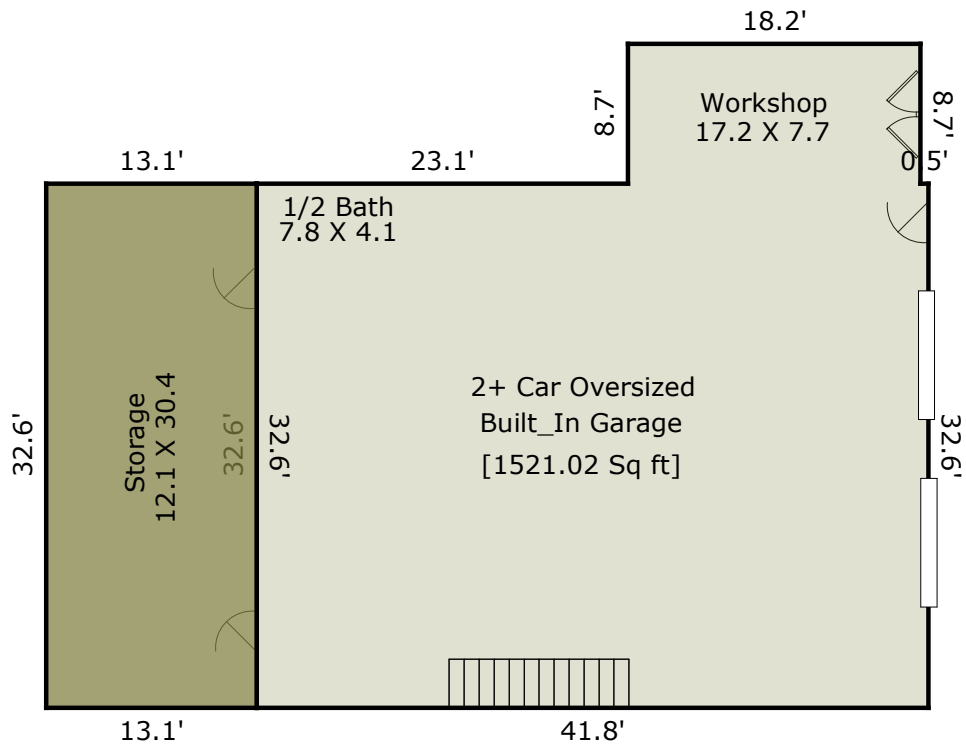
Living Area		Calculation Details	
First Floor	2227.33 Sq ft	$20.5 \times 10.2 =$	209.1
		$32.6 \times 30 =$	978
		$24.9 \times 40.7 =$	1013.43
		$13.4 \times 2 =$	26.8
<b>Total Living Area (Rounded):</b>	<b>2227 Sq ft</b>		
Non-living Area			
Wood Deck	539.7 Sq ft	$16.2 \times 14 =$	226.8
		$10.5 \times 29.8 =$	312.9



TOTAL Sketch by a la mode

**Area Calculations Summary**

Living Area		Calculation Details
Second Floor	599.72 Sq ft	$18.8 \times 31.9 = 599.72$
<b>Total Living Area (Rounded):</b>	<b>600 Sq ft</b>	

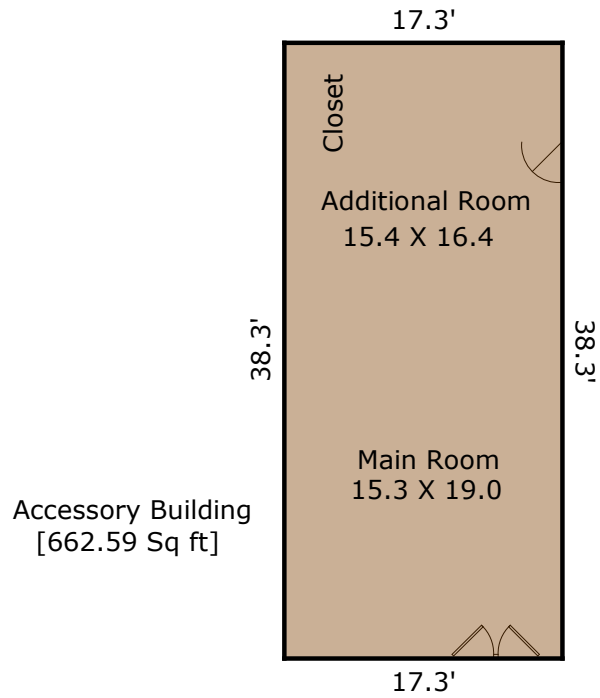


TOTAL Sketch by a la mode

**Area Calculations Summary**

**Non-living Area**

Basement	427.06 Sq ft	$13.1 \times 32.6 = 427.06$
2 Car Built-in	1521.02 Sq ft	$41.8 \times 32.6 = 1362.68$ $18.2 \times 8.7 = 158.34$



TOTAL Sketch by a la mode

**Area Calculations Summary**

**Non-living Area**

Accessory Building

662.59 Sq ft

$17.3 \times 38.3 = 662.59$