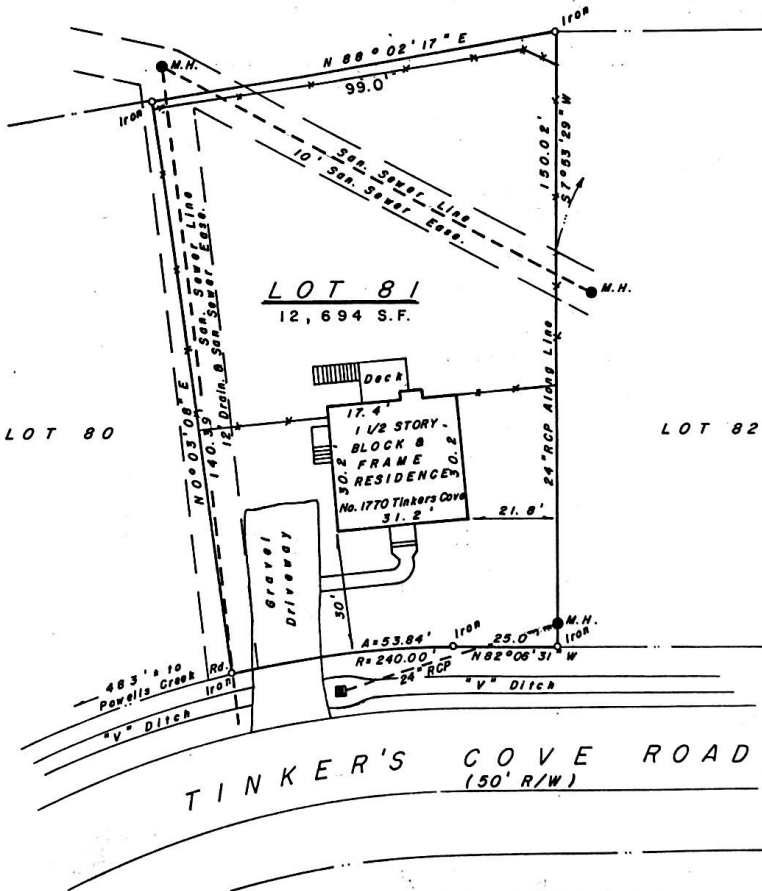


THIS IS TO CERTIFY THAT ON JUNE 13, 1986, I SURVEYED THE PROPERTY SHOWN ON THIS PLAT AND THAT THE TITLE LINES AND WALLS OF THE BUILDINGS ARE SHOWN HEREON.

*Arthur F. Edwards*  
 ARTHUR F. EDWARDS, C.L.S.  
 CERTIFICATE NO. 1170

NO SETBACK REQUIREMENTS ARE NECESSARY FOR PLANNED UNIT DEVELOPMENTS. (ALBEMARLE COUNTY ZONING ORDINANCE ART. 2, PAR. 2-7-9.)  
 SERVICE UTILITIES ARE UNDERGROUND.  
 THE IMPROVEMENTS HEREON ARE IN COMPLIANCE WITH THE PERTINENT ZONING ORDINANCES.  
 PROPERTY IS NOT IN HUD DEFINED FLOOD ZONE.



PHYSICAL SURVEY SHOWING  
 LOT 81, SECTION 3  
 HOLLYMEAD

Scale: 1" = 30' ALBEMARLE COUNTY, VIRGINIA JUNE 13, 1986.

**B. AUBREY HUFFMAN & ASSOCIATES, LTD.**  
 CIVIL ENGINEERING - LAND SURVEYING - LAND PLANNING  
 CHARLOTTESVILLE, VIRGINIA