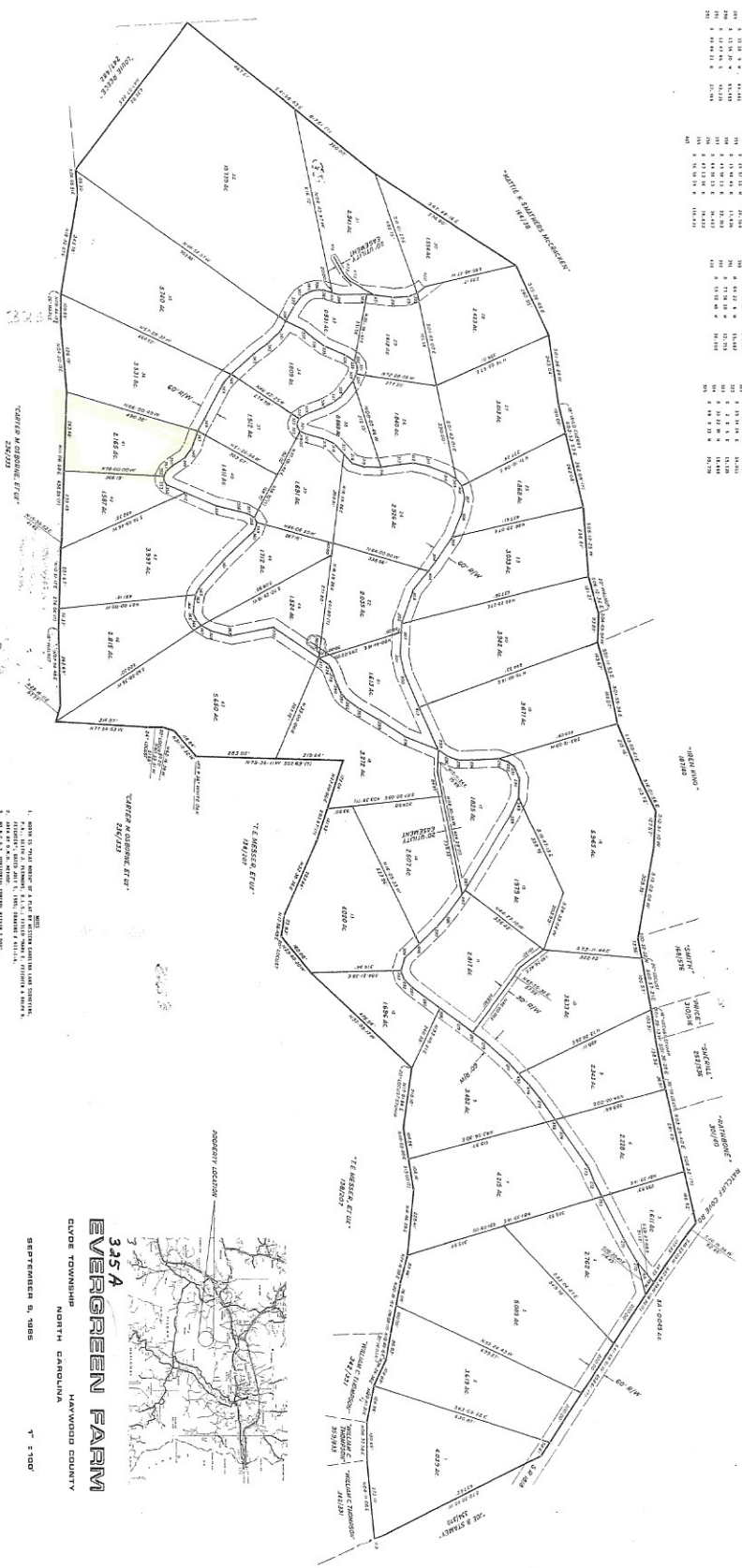


RECORDED IN THE HAYWOOD COUNTY OFFICE OF THE REGISTER OF DEEDS AT CABINET "B", SHEET 325-A

B 3  
 325 F 2120  
 325 A  
 by: Nelson D. Davis, Deputy  
 Brandon T. Placette  
 Checked by Placette



PLAT	ACREAGE	SECTION	TOWNSHIP	COUNTY
201	...	...	...	...
202	...	...	...	...
203	...	...	...	...
204	...	...	...	...
205	...	...	...	...
206	...	...	...	...
207	...	...	...	...
208	...	...	...	...
209	...	...	...	...
210	...	...	...	...
211	...	...	...	...
212	...	...	...	...
213	...	...	...	...
214	...	...	...	...
215	...	...	...	...
216	...	...	...	...
217	...	...	...	...
218	...	...	...	...
219	...	...	...	...
220	...	...	...	...
221	...	...	...	...
222	...	...	...	...
223	...	...	...	...
224	...	...	...	...
225	...	...	...	...
226	...	...	...	...
227	...	...	...	...
228	...	...	...	...
229	...	...	...	...
230	...	...	...	...
231	...	...	...	...
232	...	...	...	...
233	...	...	...	...
234	...	...	...	...
235	...	...	...	...
236	...	...	...	...
237	...	...	...	...
238	...	...	...	...
239	...	...	...	...
240	...	...	...	...
241	...	...	...	...
242	...	...	...	...
243	...	...	...	...
244	...	...	...	...
245	...	...	...	...
246	...	...	...	...
247	...	...	...	...
248	...	...	...	...
249	...	...	...	...
250	...	...	...	...

PLAT	ACREAGE	SECTION	TOWNSHIP	COUNTY
251	...	...	...	...
252	...	...	...	...
253	...	...	...	...
254	...	...	...	...
255	...	...	...	...
256	...	...	...	...
257	...	...	...	...
258	...	...	...	...
259	...	...	...	...
260	...	...	...	...
261	...	...	...	...
262	...	...	...	...
263	...	...	...	...
264	...	...	...	...
265	...	...	...	...
266	...	...	...	...
267	...	...	...	...
268	...	...	...	...
269	...	...	...	...
270	...	...	...	...
271	...	...	...	...
272	...	...	...	...
273	...	...	...	...
274	...	...	...	...
275	...	...	...	...
276	...	...	...	...
277	...	...	...	...
278	...	...	...	...
279	...	...	...	...
280	...	...	...	...

1. BEARS THE BURDEN OF THE DEED.
2. THE DEED IS THE SOURCE OF TITLE TO THE LAND.
3. THE DEED IS THE SOURCE OF TITLE TO THE LAND.
4. THE DEED IS THE SOURCE OF TITLE TO THE LAND.
5. THE DEED IS THE SOURCE OF TITLE TO THE LAND.
6. THE DEED IS THE SOURCE OF TITLE TO THE LAND.
7. THE DEED IS THE SOURCE OF TITLE TO THE LAND.
8. THE DEED IS THE SOURCE OF TITLE TO THE LAND.
9. THE DEED IS THE SOURCE OF TITLE TO THE LAND.
10. THE DEED IS THE SOURCE OF TITLE TO THE LAND.
11. THE DEED IS THE SOURCE OF TITLE TO THE LAND.
12. THE DEED IS THE SOURCE OF TITLE TO THE LAND.
13. THE DEED IS THE SOURCE OF TITLE TO THE LAND.
14. THE DEED IS THE SOURCE OF TITLE TO THE LAND.
15. THE DEED IS THE SOURCE OF TITLE TO THE LAND.
16. THE DEED IS THE SOURCE OF TITLE TO THE LAND.
17. THE DEED IS THE SOURCE OF TITLE TO THE LAND.
18. THE DEED IS THE SOURCE OF TITLE TO THE LAND.
19. THE DEED IS THE SOURCE OF TITLE TO THE LAND.
20. THE DEED IS THE SOURCE OF TITLE TO THE LAND.

**WESTERN CAROLINA LAND SURVEYING, P.A.**  
 WANNESVILLE, NORTH CAROLINA 28689-0177  
 KEITH PLEMMONS, R.L.S. 1280

**EVERGREEN FARM**  
 325 A  
 CLYDE TOWNSHIP  
 NORTH CAROLINA  
 HAYWOOD COUNTY

SEPTEMBER 9, 2005

7'-0" 3100

STATE OF NORTH CAROLINA, COUNTY OF HAYWOOD  
 STATE OF NORTH CAROLINA, COUNTY OF HAYWOOD  
 I, **LEONARD STAMBOUS**, Surveyor General,  
 do hereby certify that the above and foregoing is a true and correct copy of the original record of the survey of the land described in the foregoing plat, as the same appears on the books of the Register of Deeds of the County of Haywood, North Carolina.

LEONARD STAMBOUS  
 Surveyor General  
 HAYWOOD COUNTY, NORTH CAROLINA