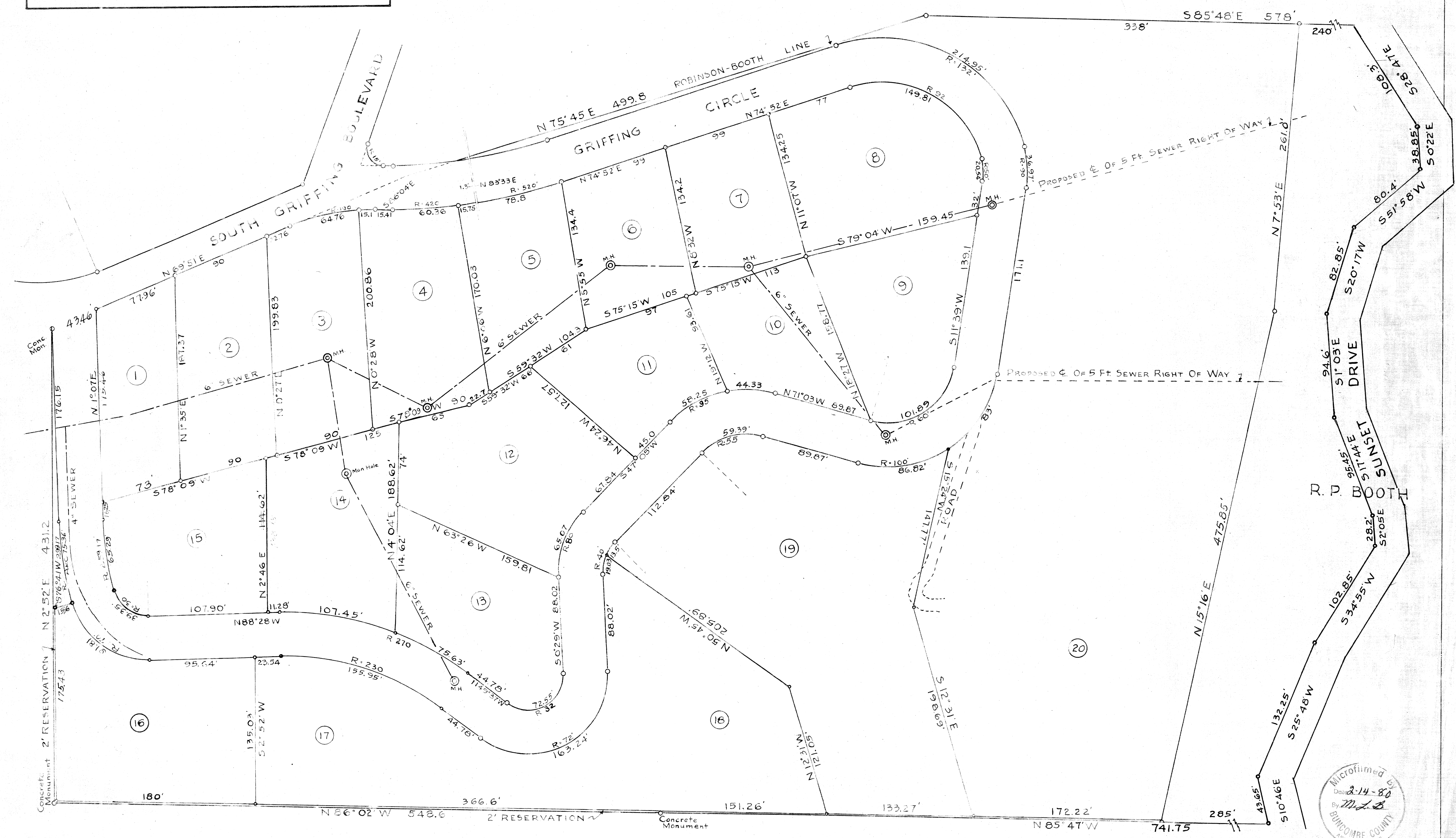


ROBINSON-BOOTH BERGER TRACT
 GRIFFING CIRCLE, ASHEVILLE, N. C.
 SCALE: 1" = 50' OCTOBER 30, 1952
 CARTER & BEARDEN, ENGINEERS

M E CARTER
 OCT 52
 M. E. Carter

1 Nov. 1952
 C. L. Lumball



Microfilmed by
 Date 2-14-80
 By M. L. B.
 BUNCOMBE COUNTY
 ASHEVILLE, N. C.